

CuteFTP v1.4 Final Beta 4

Shareware

Copyright © 1995 Alex Kunadze
All rights reserved.

**WARNING: THIS HELP FILE IS UNDER CONSTRUCTION, SO SOME TOPICS MAY BE
OUTDATED OR MISSING**

[Introduction](#)

[Menu commands](#)

[Operations](#)

[Command Line options and Scripting](#)

[I'm looking for a job](#)

[What's New?](#)

[Note for public software archives maintainers and Web publishers](#)

[License agreement](#)

[Registration and Technical Support](#)

[CuteFTP related Internet resources](#)

[Contacting the author](#)

[Acknowledgements](#)

Introduction

FTP, or File Transfer Protocol, has been around for many years as a standard protocol for transferring files between remote computer systems. Until recently, it was used almost exclusively on UNIX workstations and mainframes, but after PC users gained access to Internet it has become a popular alternative to BBS systems. The biggest limitation was that FTP-compliant software usually used command line interface and it wasn't an easy task for beginners to make them work. As Internet grew more and more popular, new standards appeared (Gopher, WWW), providing for more user-friendly front-end software. However, FTP wasn't forgotten. It's still very popular among power users and computer professionals, who are ready to trade fancy user-interface for the power of FTP.

CuteFTP is one of very few programs that allow novice users to utilise the capabilities of FTP without having to know all the details of the protocol itself. The strongest point of **CuteFTP** is it's ability to gather almost every available bit of information about files and directory structure of a remote system and present it to the user in an easy-to-use file-manager-like browsing screen. **CuteFTP** will also keep data transfers to a minimum by means of storing all the data it can to a temporary file.

Main features of CuteFTP are:

- Intuitive user friendly interface, modelled after Windows File Manager, with all the modern features, such as toolbar and context-sensitive help. No more clumsy command lines.
- Full screen configurable local and remote directory browsing. See [Browsing screen description](#)
- Integrated handling of index files. No need to launch notepad to view file descriptions. See [Handling index files](#)
- Caching of already visited directories and index files for them. No need to transfer a dir list for a single directory hundred times.
 - Automatic directory tree downloading.
- Flexible [FTP Site Manager](#). FTP Sites are organised in hierarchical tree, which is completely customisable. Each FTP Site entry has extensive configuration options.
- Robust stop command. With **CuteFTP** you can cancel any operation in progress without losing connection. See [Stopping commands in progress](#)

Features of CuteFTP, available in registered version only:

- Resuming interrupted downloads.
- (Comming soon) Bookmarks.
- (Comming soon) Non-standard FTP commands.
- (Comming soon) Direct server-to-server transfers.

Ftp Menu Commands

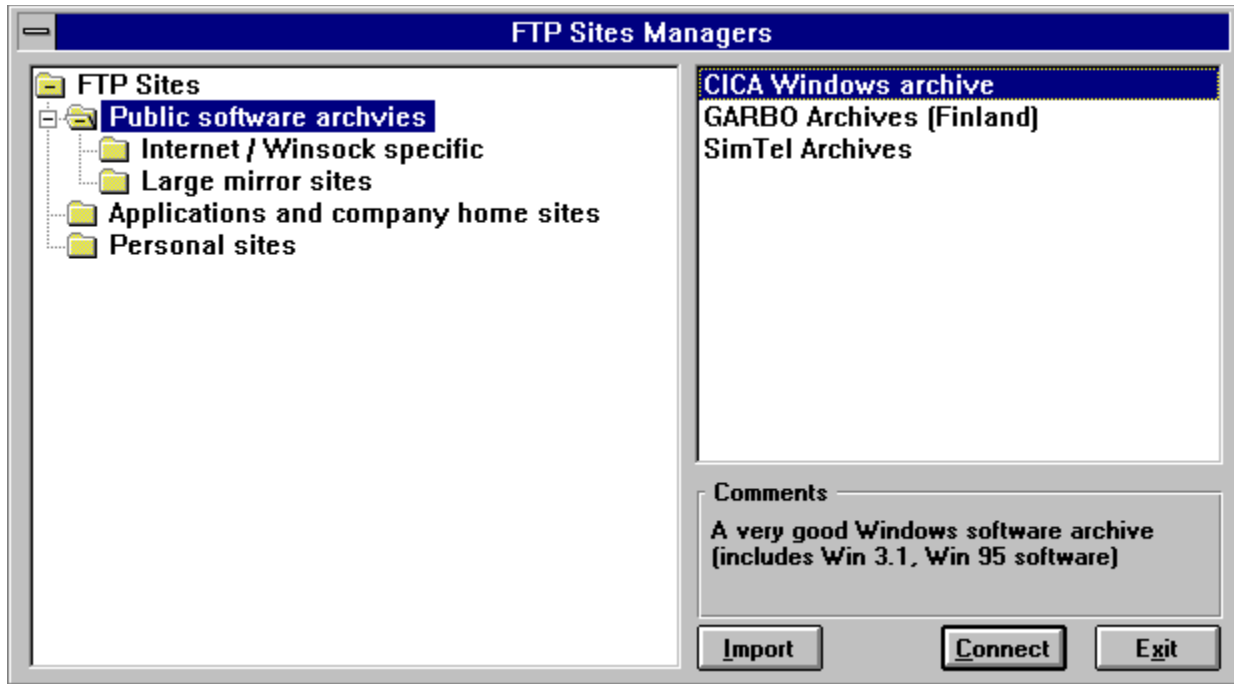
<u>FTP Sites Manager</u>	Browse FTP Sites database.
<u>Quick Connect</u>	Quickly connect to a remote system, bypassing FTP Sites Manager
<u>Disconnect</u>	Terminate current session, but don't exit program.
<u>Options</u>	Configure CuteFTP.
<u>Select font</u>	Select font for browsing screen
<u>Colors</u>	Select colors for <u>InfoBar</u>
<u>Transfer type</u>	Select file transfer type.
<u>Download</u>	Receive file(s) from remote site.
<u>Upload</u>	Send a file to remote site.
<u>View</u>	Download a file and view it
<u>Change dir</u>	Manually change directory.
<u>Delete</u>	Delete files and/or directories
<u>Rename</u>	Rename files
<u>Make new dir</u>	Create new sub-directory
<u>Stop</u>	Stop any operation in progress.
<u>Exit</u>	Terminate session and exit CuteFTP.

FTP Site Manager

Toolbar: 

Hot-key: F4

This dialog is the central point of **CuteFTP**. It's purpose is to maintain a database of FTP sites and various site-specific connection parameters.



The left-most list contains **folders**, or site groups. They are organised in hierarchical tree. You can expand or collapse tree branches by double-clicking on them.

The right-most list shows the contents of currently selected **folder**, each entry representing an FTP site. Double-clicking an entry, or hi-lighting it and clicking **Connect** button will direct **CuteFTP** to connect to that site.

You can **add, delete or edit** entries in both lists. To do this, move mouse pointer to the list you wish to modify and press-and-hold right mouse button. The corresponding entry management menu will pop-up on the screen.

Folders can only be renamed. FTP Site entries have a set of parameters, which are edited in [FTP Site Edit](#) dialog.

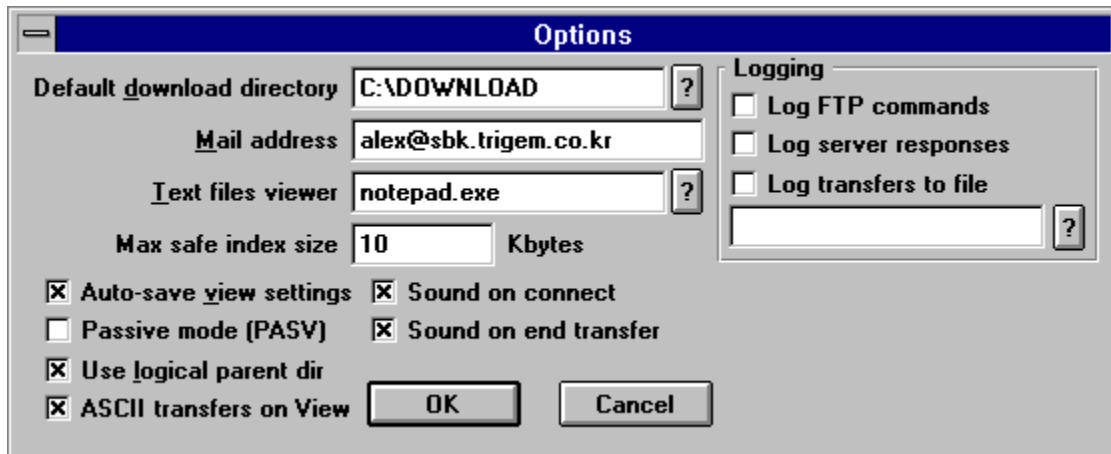
You can change position of any folder in the list using drag-and-drop technique. Just drag a folder to it's new parent folder.

You can also drag-and-drop FTP Site entries to a folder. However, you cannot change entry position in the list. It's always alphabetically sorted.

Comments box shows various notes for the selected FTP Site entry. You can modify the text, displayed in this box, as part of editing FTP Site entry (see [FTP Site Edit](#) dialog).

Import button allows you to import FTP sites databases from CuteFTP 1.3 (it used entirely different database structure) and from WS_FTP by John Junod. All imported sites are placed into the root folder, initially named "FTP Sites".

Options dialog



This dialog is used to set various **CuteFTP** options.

Default download directory is where all received file will be stored. It defaults to the same directory **CuteFTP** executable is in. You can override this parameter for each site in the [FTP Site Edit](#) dialog box.

Mail address is your full e-mail address to be used as a password for anonymous logins. It's not checked to be a valid address in any way so you can type whatever you want here. However, it's a matter of etiquette to give your real e-mail address to the remote system...

Text files viewer is the name of the program to be executed when you want to view text files. It defaults to Notepad.

Max safe index size is the size (in kilobytes) of the largest index file to load without any prompts. If index file size exceeds this limit **CuteFTP** will prompt you. Setting this parameter to 0 enables prompting for all index files, while setting it to 32000 effectively disables prompting. It is not advisable to set this parameter to a high value because there might be multi-directory index files on the sites, which **CuteFTP** can't handle. Default is 10 KBytes.

Auto-save view settings check-box causes **CuteFTP** to save all display options to be saved on exit and restored next time you start the program. This includes the browsing mode selected, long listing mode configuration and window position and size. Default is YES.

Passive mode (PASV). Normally, when a data transfer is initiated, server side of the link requests connection from the client side (**CuteFTP**). This may pose problems for some security-enforced networks. **Passive mode** specifies that **CuteFTP** will initiate all connections and server will only wait for requests, therefore avoiding the conflict with security system. It's not recommended to turn this feature on unless you experience problems with default setting. Default is OFF.

Use logical parent dir toggle specifies whether or not you want **CuteFTP** to regard parent directory to be the previously visited directory, rather than just a physical parent. It is useful on sites with many inter-directory links. Default is YES.

ASCII transfers on View switch allows **CuteFTP** to switch to ASCII transfer mode whenever you wish to view a remote file. You should keep that option ON, unless you are using a custom file viewer, which can view something besides plain text files.

Sound on connect and **Sound on end transfer** options specify whether you want **CuteFTP** to notify you of completed connect and/or transfer operation with a beep.

Log FTP commands and **Log server responses** switches specify whether you want to see FTP commands, generated by **CuteFTP**, and remote server's responses to them. If these options are turned on, **CuteFTP's** log window can become unreadable due to the large number of messages. Therefore, it is recommended to leave these options OFF.

Log to file option instructs **CuteFTP** to log connects, uploads and downloads to a text file. In the edit field below this option you should enter full path and file names of the log file.

Starting and terminating sessions

Sessions are started via the Connect dialog. Select an entry for the remote site you wish to connect to and click OK button. That done, **CuteFTP** will try to connect to that remote FTP server. It usually takes some time to get the connection, especially on busy sites, so please be patient. Connection process is complete after the browsing screen has been filled with files and/or directories. You can start working then.

You can terminate current session by selecting Disconnect command from Ftp menu or by clicking it's equivalent tool-bar button. **CuteFTP** will shut down current connection and clear the browsing screen. You can then connect to another site.

Session will also be terminated if you exit **CuteFTP**.

Handling index files

Many FTP sites maintain a list of descriptions for files and directories. However, FTP protocol doesn't provide for retrieving them, so usually descriptions are stored in text files with names like INDEX.TXT or FILES.BBS and users have to download them as normal files and view in a text editor.

CuteFTP allows you to automate that process by automatically loading these files whenever you change directory and appending files descriptions to the browsing screen entries (only visible in long listing mode, see [Browsing screen](#)).

When you change to a new (not visited before) directory **CuteFTP** will look for files containing "index" word in their names. If there's only one such file, it will load it automatically. Otherwise it will prompt you which file to use.

Index files can be pretty big and take a lot of time to transfer, so **CuteFTP** will ask you for confirmation, if an index file is bigger than 10Kbytes (default limit, can be changed in [Options](#) dialog).

For FTP sites with slow connections you might want to load only particular index files so as to minimise transfer time. You can do so by disabling automatic index loading ([\[View->Auto-load index file\]](#) menu option) and selecting [\[View->Retreive index\]](#) menu item when you want to view file descriptions.

There are 2 issues you should be aware of:

WARNING 1: Initially, index files are not intended for automatic processing. The result is that there are many different formats for the contents of these files. **CuteFTP** will handle most popular formats, including those used on major Internet archives (e.g. SimTel, CICA), but there's no guarantee that it can understand index files on a particular FTP site. If you successfully load an index file and get no descriptions in the browsing screen - it's most likely incompatible with **CuteFTP**. There's still a chance that the index file you loaded was empty or contained only some administrative notes, so please try a few more directories before tuning index loading off.

WARNING 2: Many FTP sites keep compiled listings for all their files or for major file areas. At the moment **CuteFTP** cannot handle these files so don't expect to get all descriptions in the browsing screen for all sub directories if you download those files. Unfortunately, names of these compiled listings are same as of normal index files, so **CuteFTP** will try to load them also. It is your responsibility to detect and reject them. It's usually easy since those files are huge in size (from couple of hundreds Kbytes to several mega bytes).

Operations

- Starting and terminating sessions
- Browsing screen
- Handling index files
- Stopping commands in progress
- Filtering directory listings
- Selecting groups of files

Browsing screen


Browsing screen is the main part of **CuteFTP**. It consists of 3 parts:

- **Log window** on the top is the place where all messages on remote operations status are posted.
- **Local directory browser** is on the left side. It displays the contents of the current local directory. When you download a file it will be stored in that directory.
- **Remote directory browser** (on the right side) is the most important section. It displays remote directory contents and allows you to communicate with the remote host you're connected to.

There're resizing bars between all three parts. You can "drag" them to customise the appearance of the browsing screen.

Each entry in **local and remote directory browsers** corresponds to a file or a directory. Before each file or directory name there's an icon, showing the kind of entry. Here are the meanings of those icons:

 : directory

 : symbolic link to a directory, basically same as directory. Icon is different for information only.


 : text file

 : binary file

 : index file

Most commands are executed when you double-click an entry in that screen.

For directories ( icon) and directory links (



 icon) **CuteFTP** will change to that directory. In the **remote browser** it will take some time to transfer directory listing and index file (if index loading is enabled). However, the delay will be much shorter if you have already visited that directory. In that case **CuteFTP** will retrieve the needed information from a temporary file instead of requesting it from remote server.

For files **CuteFTP** will download the file you click on and place it in you current local directory, if you click a remote file, or Upload it to the server, if you click local directory entry. If transfer mode auto-detection is turned on, ASCII mode is used for text and index files and Binary mode is used for binary files.

Browsing screen has 2 display formats:

Short listing mode is designed for quick browsing. It displays only file names and icons and has multiple columns.

Long listing mode displays all available information (size, date and description) about files and directories along with file names and icons and has only 1 column. You can configure it to display only information you want to see through View->Display details sub-menu.

You can switch between these modes through View menu or tool-bar buttons ( and )

Stopping commands in progress

CuteFTP allows you to interrupt any operation in progress without losing control of connection to the remote site. It is done by selecting Ftp->Stop menu item. However, there are some penalties for doing so.

First, it is not advisable to stop anything except file transfers, directory listings transfers or index files transfers since all the other operations require only 1 line response from the server. If they are taking too much time then your link is too slow at the moment and stopping will not help it.

Second, do not expect the operation to stop immediately. FTP server on the other end of the link must acknowledge abortion and send back appropriate response. However, for the sake of reliability **CuteFTP** doesn't specifically wait for that response. It will abort immediately after you press Stop and wait for any data from the server in the background. You must wait until you see "Trashed response data received" message in the log window to continue. If you try to initiate any operation before you get that message you will not get desired results and will have to wait even more, so please be patient.

Third, if you stop directory change operation you may have to Refresh (View->Refresh menu item) directory listing. This is necessary because **CuteFTP** loses track of the current directory on the server side.

Disconnect command

Toolbar: 

Hot-key: Ctrl+X

This command will terminate current FTP session and close all active connections to remote server.

Transfer type sub menu


Transfer type setting determines which transfer mode will be set when you initiate a file transfer. It can be one of the following:

ASCII: This mode is used for transferring text files between sites running different operating systems. It will take care of all the necessary translation to make text readable. However, use it with caution since binary files will be corrupted if transferred in this mode. Text files with non-English characters in it will also be corrupted.

Binary: This is the most frequently used transfer mode. It transfers raw data without any translation.


Auto: This mode will let **CuteFTP** to select the best mode for a particular file.

Auto-load index

Toolbar: 


This toggle specifies whether **CuteFTP** should automatically load index file when changing to a new directory. For more information see [Handling index file](#). This setting is also available in extended [FTP Site Edit](#) dialog.

Download command

Toolbar: 
Hot-key: Ctrl+PgDn


This command will download selected files and directories (including all sub-directories) from remote site to your hard disk. You can also download a single file by double-clicking it in the browsing screen.

Upload command

Toolbar: 
Hot-key: Ctrl+PgUp


This command will upload selected file to remote site. Enabled only when Local Browser has the input focus.

Change dir command

Toolbar: 
Hot-key: Ctrl+D


This command lets you to manually change directory by typing it's path name.

Retrieve index command

Toolbar: 
Hot-key: Ctrl+I

This command will immediately retrieve index file for current directory. Use it if you have Auto-load index toggle disabled. For more information see [Handling index file](#).

Stop command

Toolbar: 
Hot-key: F8

This command will immediately stop any operation in progress. However, you must wait for a "Trashed response data received" message to appear in the log window. For more information see [Stopping commands in progress](#).

Exit command

Hot-key: Ctrl+Q

This command will terminate current FTP session and exit **CuteFTP**.

Menu commands


Ftp menu

View menu

View menu commands


<u>Short listing</u>	Switch to short-listing mode
<u>Long listing</u>	Switch to long-listing mode
<u>File details</u>	Configure long-listing display mode
<u>Sorting</u>	Change directory sorting method
<u>Auto-load index</u>	Toggle auto index file loading after changing to a new directory.
<u>Retrieve index</u>	Retrieve index file for current directory.
<u>Refresh</u>	Reload current directory listing and/or index file
<u>Find</u>	Find text in file names and descriptions
<u>Find Next</u>	Repeat last find

Short listing command

Toolbar: 
Hot-key: F2

This command will switch browsing screen to short listing mode. See [Browsing screen](#) for more information.

Long listing command

Toolbar: 


Hot-key: F3

This command will switch browsing screen to long listing mode. See [Browsing screen](#) for more information.

File details sub menu

This sub menu lets you select which file details you want to view in long listing browsing mode. See [Browsing screen](#) for more information.

Refresh command

Toolbar: 
Hot-key: F5

Normally **CuteFTP** stores all directory listings in a disk cache and retrieves them if you come back to already visited directory. It saves a lot of time, but sometimes cached data may be out of date. Refresh command will let you reload directory listing and index file for current directory.

License Agreement

CuteFTP software is Copyright (C) 1995, Alex Kunadze.

All rights for this software are reserved by the author.

You are not allowed to modify or reverse engineer the contents of the program files.

CuteFTP is **Shareware**. That means you can use it free of charge only for 30 days evaluation period. After that, you must either register your copy product by paying a small license fee to the author, or stop using it.

Besides legalising your usage of **CuteFTP**, there're several other reasons to register **CuteFTP**. Please, see [Registration and Support](#) section for more info.

Regardless of your registration status, you're encouraged to distribute unregistered version of **CuteFTP**. Registered version cannot be distributed at all.

This software cannot be resold or used in any profit-generating activities, including, but not limited to, distributing **CuteFTP** as part of commercial products, or in support of commercial services, without the authors expressed written permission.

There is no warranty or claim of fitness or reliability. The program is distributed **AS IS**, and the author shall not be held liable for any loss of data, down time, loss of revenue or any other direct or indirect damage or claims caused by this software.

Registration

As defined in **CuteFTP license**, you must register the product to continue using it after the 30-days evaluation period is over. Registration involves paying a small fee of US \$30 to the author.

Here's what you get for your money, when you register:

- **Tech support.** Provided through e-mail. I'll answer any question about CuteFTP within 24 hours of receipt of your message. I'll do my best to solve (or help you to solve) any problems you might have in conjunction with the product.
- **Extra features, not available in freeware version.** Currently, that includes the ability to resume interrupted file transfers. In a month or two the full commercial version of CuteFTP will be ready to ship, and you will get a lot of other useful features, including bookmarks, transfer queue and a full-fledged FTP Server.
- **Free upgrades.** You'll receive all upgrades free of charge until version 2.0 is released. At the current speed of development, it will only happen in couple of years, if ever.

What you need to do to get all this:

Get your credit card ready and call one of these numbers:

**WARNING!! THE NUMBERS AND ADDRESSES BELOW ARE FOR ORDERS ONLY!!
NO SUPPORT, INQUIRIES OR ANY OTHER INFORMATION IS AVAILABLE THERE!!**

Call 800-2424-PSL

or

+1-713-524-6394

(7am - 6pm CST Mon.-Thu., 7am - 12:30 pm CST Fri.)

OR

FAX +1-713-524-6398

or

e-mail to 71355.470@compuserve.com

Be sure to prepare the following information beforehand: Your full name, address, phone, credit card number and expiration date, credit card billing address, email address and mail attachment style.

The registration file will be sent to you via e-mail in 2-4 days. If you placed an order and didn't receive registration after that period - notify me via e-mail to alex@sbk.trigem.co.kr and I'll check your order status.


Contacting the author

All bug reports and suggestions should be directed to **cutebeta-l@sbk.trigem.co.kr**. But remember, that messages, sent to this address, are received by **CuteFTP Beta Testing Team**, in addition to myself. So if you have any private issues to discuss with me personally, write to **alex@sbk.trigem.co.kr**

Font selection

Selecting this menu item will bring up a font selection dialog, where you can select a custom font to be used in the browsing screen.

View command

Toolbar: 
Hot-key: Ctrl+V

This command will download a single file from remote host to a temporary file and launch Notepad to let you view the contents.

Sorting submenu

This submenu lets you select the sorting method you wish to apply to the directory listing entries. Your choices are:



By Name
Sort by file names



By Size
Sort by file sizes



By Date
Sort by file dates

What's New?

Version 1.4 Final Beta 3

New Features

- "Resolve links" switch (for UNIX systems only)
- Retry Delay option

Bug Fixes

- Several small fixes to 16bit version bugs

Version 1.4 Final Beta 2

New Features

- Support for Chameleon FTP Server
- Support for OpenVMS and VMX UCS servers
- QuickConnect dialog extensions
- Site Manager now shows host names along with comments
- Click on InfoBar will bring up Change Dir dialog



Configurable text files extensions list.

Bug Fixes



Several firewall-related bugs fixed.



Upload filename bug fixed (32bit).



GPF using Command-line fixed (16bit).

- Too many others to list... Mostly in 32bit version.

Version 1.4 Final Beta

New Features

- 32bit version (NT and Win95)
- Not much else, mostly small bug fixes

Version 1.4 Beta 8

New Features

- Support for QVTNet, SuperTCP and most likely for other DOS/Win3.1 FTP servers.
- Drag-drop extended to allow dropping files on InfoBar
- Directory info command
- Auto-index, Logical Parent and Use Firewall checkboxes in Site Edit dialog are now tri-state, with intermediate state meaning "use default".

Bug Fixes

- Fixed a memory leak (wasn't fixed completely in Beta 7)
- Fixed command-line processing. Tested with WS_Archie
(FTP Setup: cuteftp.exe host=%h anonym remote=%d get=%f)
- Fixed index saving in cache.
- Rewritten list-box drawing and management code. CuteFTP can now handle up to 30000 entries in a directory.
- Fix double-login with firewalls
- Fixed a bug with some weird use@site firewalls.

- Fixed PASV mode.
- Several minor bugs, don't remember which ones.

Version 1.4 Beta 7

New features

- Execute command (download a file and execute it's associated program)
- VMS MultiNet FTP Server support
- Dir change message browsing
- Extended Firewall compatibility (not tested)
- "Property sheet" style options dialog
- Customizable tool-bar
- Custom sounds (including WAV support)
- Many new options

Bug Fixes

- Illegal filename chars substitution
- Optimised cache saving (should reduce disk access when saving cache files)
- Fixed a memory allocation bug, which caused CuteFTP to allocate large amounts of memory when running for a long time. This bug could be the reason for many other problems.
- Date display format is now consistent with Windows settings
- Added management buttons in Sites Manager

Version 1.4 Beta 6

Bug Fixes

- "Can't connect" bug
- No horizontal scroll bar in Long Listing mode
- View command now functional in Local browser

Version 1.4 Beta 5

New features

- Drag-drop upload/download
- Filter masks
- FireWall support (not tested)
- Sorting by file extensions
- Transfer time stats display
- Some new options

Bug Fixes

- Passive mode bug
- Problem with TGV's MultiNet stack
- Window position saving bug
- Non-standard Windows color palette support
- Display problem in Site Manager when in high-resolution mode
- Local files time bug
- Entirely rewritten UNIX directory parsing code. Much more robust and smart now.

Supports all UNIXes I've come across, Novell FTP Server, SERV-U, WFTPD and most likely some other %99 UNIX-compatible servers.

- FileNames with blanks are now supported

Version 1.4 Beta 4

New features

- Right Mouse Button invokes pop-up menus in Local and Remote Browsers and in FTP Sites Manager list boxes
- Drag-Drop in FTP Sites Manager
- Import function for CuteFTP 1.3 and WS_FTP Site databases
- Log level control options
- Log session summary to file option
- Quick Connect command
- FTP Sites Manager can now be invoked during session in progress
- Separate Show Date and Show Time options in File Details menu
- Some other small changes...

Bug Fixes

- Revised date display format
- Sorting by date bug in Local Browser and on NT systems
- Local browser current directory tracking bug
- Updated help file, thought it still needs some work
- Several other minor bugs...

Version 1.4 Beta 3

New features

- Change of status. Now FREEWARE !!!
- Hierarchical host configurations manager.

Bug fixes

- Fixed incompatibility with Novell LAN WorkPlace.

Version 1.4 Beta 2

New features

- Command-line options and scripting
- Support for Windows NT native FTP Server

Bug fixes

- Upload doesn't work if Auto-detect transfer type is set in Connect dialog. Fixed.
- Transfer type setting is now global (was separate for local and remote)
- Cannot read hosts entries if HOSTS.DAT file is read-only. Fixed.

Version 1.3

New features

- Local directory browser
- Delete, Rename and MakeDir Commands
- Selectable file viewer
- Selectable colors
- Unregistered version is no longer expiring. It's fully functional, but has a 30 days legal trial period. I rely on your conscience to register the program.

Bug fixes

Previous version of **CuteFTP** was pretty buggy, for which I apologise to everybody who had problems with it. It lacked testing and had some major faults in it.


This version (**1.3**) has been heavily tested by a small team of experienced beta testers on a variety of platforms (Win31, WFW311, Win95). As a result, it runs MUCH more stably than 1.2. Notably, there were no GPFs or hang-ups detected in the final pre-release program.

Note for public software archives maintainers and Web publishers

I have recently did a survey of most well-known winsock applications Web pages and, to my regret, found that most of them include outdated versions of **CuteFTP** in their listings.


To avoid this unfortunate situation I ask that you send me a note if you're putting **CuteFTP** in your archive or on your Web page. This measure is not intended to restrict publishing of information about **CuteFTP** in any way. It's sole purpose is to provide a mechanism for distributing information on new releases of **CuteFTP**. When I receive your note I will put your address in a mailing-list, where I post announcements of new public version. It will save a lot of headache for all of us, so please don't forget to do it.

Delete command

Toolbar: 
Hot-key: Del


This command will delete selected local or remote files and/or empty directories.

Rename command

Toolbar: 
Hot-key: Ctrl+N

This command will rename selected local or remote files.

Make new dir command

Toolbar: 
Hot-key: Ctrl+M

This command will create a new directory on local or remote systems.

InfoBar

InfoBar is a special region on **CuteFTP** window, which displays **current local directory** (left-most segment), **current remote directory** (middle segment) and **transfer status** if any (right-most segment). It is located between the tool-bar and the browsing screen.

At any given time either **local** or **remote** directory segment is hi-lighted, indicating which browser has the input focus.

Colors sub-menu

Commands in this sub-menu allow you to change colors of the InfoBar.

InfoBar Highlight Change background color of hi-lighted InfoBar segment.

Progress indicator Change color of progress indicator

Command Line options and Scripting

All command line options are in one of the 2 forms:

<option>=<value>

or

<option>

Letter case is ignored.

Here's the list of available options:

Host=<host address>

Sets the host address to connect to. **<host address>** can be a domain name, or an IP address in dotted notation (e.g. 198.44.52.32)

User=<user ID>

Pass=<password>

Sets UserID and Password to login with. If password is required, but not given, **CuteFTP** will prompt you for one. For security reasons this prompt is not disabled while in auto-processing mode. Both parameters are strings.

Retry=<retry count>

Sets Retry count. Decimal number.

Port=<port number>

Sets sockets port to connect to. Decimal number.

Local=<local directory>

Sets local directory.

Remote=<remote directory>

Sets remote directory.

Get=<remote file name>

Downloads a file or directory from remote host and stores it to the current local directory (set by **Local** option). **<remote file name>** can be either a full path name of a file or directory, or just the file name. In the latter case remote directory is assumed to be the current one (set by **Remote** option).

Put=<local file name>

Uploads a file to remote host and stores it to the current remote directory (set by **Remote** option). **<local file name>** can be either a full path name of a file, or just the file name. In the latter case local directory is assumed to be the current one (set by **Local**

option).

Anonym

Uses Anonymous login. UserID and Password are disregarded, if set.

Script=<script file>

Execute commands, stored in **<script file>** as if they were entered on the command line. A script file is a plain ASCII text file with one command per line. Lines beginning with # sign are considered to be comments and are ignored.

Scripts can be nested.

All parameters are processed sequentially.

Options **Host, User, Pass, Port, Retry** and **Anonym** are in effect only when connection is initiated. Therefore, specifying any of them more than once will effectively use the most recent one.

Local and **Remote** options are in effect for all subsequent **Get** and **Put** commands, until redefined. For example, command sequence

Local=c:\work

Get=/pub/report1.txt

Get=/pub/report2.txt

Local=c:\temp

Get=/pub/report3.txt

will download **report1.txt** and **report2.txt** files into **c:\work** local directory, and **report3.txt** file into **c:\temp** directory.

There's one option that is different from the above mentioned ones. It's designed to simplify integration of **CuteFTP** with other Internet software. You can specify an URL string in the format

ftp://[user ID:password@]<host name>[:port]/[path name]/[get file name]
(NOT IMPLEMENTED YET)

Resume

Alex Kunadze
135-17, Itaewon-dong,
Yongsan-ku, Seoul, Korea
alex@sbk.trigem.co.kr

SKILLS

6-years experience developing, testing and deploying applications for MS-DOS and MS Windows operating systems. Solid skills in Object-Oriented programming, Windows GUI development and Winsock-based communications software.

Programming languages: C, C++, Pascal (w/objects), SQL, Basic

Platforms: MS-DOS, MS Windows 16bit, Windows NT

Tools: MS Visual C++ 1.5 & 2.0, Borland C++ 3.1, Borland Pascal 7.0, SQLServer 4.2, SQLWindows 5.0, Win SDK, Win32 SDK, MFC 2.5, MFC 3.0, Windows Sockets 1.1

Education: 2 years with Moscow University (major: Japanese Economy) Currently pursuing BS in Computer Science with Maryland University.

Languages: Russian (native), English (very fluent), Japanese (fluent)

EXPERIENCES

Feb. 95 - present:

Developing CuteFTP, a freeware GUI-based FTP client.
(Latest version is available at <ftp://papa.indstate.edu/winsock-l/ftp/>)
Tools: MS Visual C++ 1.5, MFC 2.5, Winsock 1.1 API

Nov. 94 - present: SoftBank Korea Co., Ltd.

Network administrator (Novell Netware 3.11, Windows NT Server 3.5, Sun SPARCStation (SunOS 4.2), DSU-based internet connection)
Senior programmer for Management Information System project.
Tools: SQL Server 4.2 for NT, SQLWindows 5.0

Jan. 94 - Oct. 94: Daesung Industrial Co., Ltd.

Designed and coded a document management software package for bundling with Fujitsu page scanners.
Tools: MS Visual C++ 1.5, MFC 2.5, Kofax Imaging Toolkit 2.1

Jun. 90 - Aug. 90: SoftBank Technologies Inc.

Software evaluation intern-ship.

I'm looking for a job

I need a good Windows-based development job, preferably in one of these areas (in the order of preference):

1. Internet applications
2. Network applications
3. Commercial Windows applications
4. Whatever...

Click [here](#) to see my resume.

All suggestions are welcome! Send e-mail to **alex@sbk.trigem.co.kr**

FTP Site Edit

The screenshot shows the 'Edit Host' dialog box with the following fields and values:

- Host Label:** CICA Windows archive
- Host Address:** ftp.cica.indiana.edu
- User ID:** (empty)
- Password:** (empty)
- Initial Remote Directory:** /pub/pc
- Initial Local Directory:** (empty)
- Port:** 21
- Retry:** 0
- Max Safe Index Size:** 10
- Login type:** Normal, Anonymou**s**, Double
- Transfer type:** ASCII, Image, Auto-Detect
- Logical Parent Dirs:**
- Auto-Load Index Files:**
- Comments:** A very good Windows software archive (includes Win 3.1, Win 95 software)

In **Site name** field you specify a name, that will identify the entry in **FTP Sites Manager**.

Host name is the full internet domain name of the remote FTP site you wish to connect to. Please be careful when entering information here, since **CuteFTP** will not be able to establish connection if that name is incorrect.

Information in **User ID** and **Password** fields is used to identify you to the remote site. Password is displayed as asterisks characters to insure that nobody can look it up over your shoulder. It will also be encrypted before writing to disk. However, there are many ways to steal passwords, that you supply to **CuteFTP**, so do not save any top secret passwords in the database. You can also leave **User ID** and/or **Password** blank. In that case **CuteFTP** will prompt you for required information after you connect.

In most cases, however, marking **Anonymou**s**** radio button is enough. If you do so **CuteFTP** will assume a User ID of 'Anonymous' and send your e-mail address (which you specify in **Options** dialog) as a password. All public FTP sites support this scheme, so **Anonymou**s**** is the default for a new entry.

Login type radio buttons specify how **CuteFTP** should login to the FTP server.

Normal option specifies that UserID and Password fields are valid and should be used for user authentication.

Anonymous**** option specifies that anonymous login should be used (see above)

Double option is useful on some security-conscious systems. In this mode a user is logged in 2 steps: first as an anonymous user, and then using **User ID** and **Password** fields contents. Normally, you won't have to use this option.

Transfer type specifies the default transfer type to be used for file transfers.

ASCII mode is useful for transferring text files to/from non-DOS systems because it allows to translate text to remote system's native format, but binary files will be corrupted if this mode is used.

Image (or Binary) mode is the general all-purpose transfer mode. It is completely safe to set this mode for all types of files since data will be transferred without any translation. It might require some formatting on text files after transfer, though.

Auto-detect mode is a reasonable compromise between ASCII and Image modes. If this mode is used **CuteFTP** will transfer files with .txt extensions as ASCII files, and use Image mode for everything else.

Default is **Auto-Detect**.

Initial Remote Directory can be used to specify full path-name of a remote system's directory where you want to be immediately after connection. You can leave it blank and remote system will put you in it's default directory after login.

Initial Local Directory is the full local path-name where you want downloaded files to be stored by default. **CuteFTP** will update Local browser to show that directory after login. If you leave this field blank, default download directory (from the Options dialog) will be used.

Port (NOT the serial port) is one of the two components of the remote system's network address. Do not modify this value unless you know what you're doing.

Retry field contains the number for connect retries. It is useful when connecting to busy sites (like CICA server).

Max Safe Index Size is the size (in kilobytes) of the largest index file to load without any prompts. If index file size exceeds this limit **CuteFTP** will prompt you. Default is 10 KBytes.

Logical parent dirs toggle specifies whether or not you want **CuteFTP** to regard parent directory to the previously visited directory, rather than just a physical parent when changing to a linked directory. Default is YES.

Auto-load index toggle lets you specify if index files should be automatically loaded along with directory listings when you change to a new directory. It might be desirable to turn this off for slow sites and leave it on for fast ones. Default is YES.

In **Comments** edit box you can enter any description of the FTP Site. The text you enter will be displayed in FTP Site Manager when the entry is hi-lighted.

CuteFTP related Internet resources

Official FTP Site for CuteFTP is papa.indstate.edu

All the latest versions of **CuteFTP** are available from that site.

Directory **/winsock-l/ftp** contains the latest non-beta version.

Directory **/winsock-l/ftp/CuteFTP.Beta** contains all beta versions. Often the latest version of **CuteFTP** can be found in this directory.

Directory **/winsock-l/ftp/CuteFTP.Old** contains previous versions of **CuteFTP**. Of historical interest only.

CuteFTP Home Page is at <http://papa.indstate.edu:8888/CuteFTP/>

Check with this page from time to time to find out any news about **CuteFTP**.

This page contains **CuteFTP FAQ** (Frequently Asked Questions) document.

Announcements of new versions are posted to **alt.winsock** newsgroup, **CuteFTP-L** mailing-list and **WINSOCK-L** mailing-list (visit <http://papa.indstate.edu:8888/> for information on this mail-list and how to subscribe to it).

Acknowledgements

A very BIG and SPECIAL THANKS goes to **Issam Bandak (The BeasT Man)**, the owner of Winsock-L mailing list and the associated excellent Winsock-related FTP archive. This guy is the creator and maintainer of **CuteFTP Official FTP Site** and **Home Page**. He also patiently answered my numerous stupid questions :)

Million Thanks, Issam!

Another BIG THANKS goes to **CuteFTP Official Beta Testing Team**. Members are:

THT <tht@inlink.com>

Issam Bandak <beast@papa.indstate.edu>

Shakib Otaqui <Shakib@alquds.demon.co.uk>

Dave Hearn <hearn@minotaur.dra.hmg.gb>

Kenneth Liu <kliu@walrus.mvhs.edu>

Brian Bell <brian.bell@unn.ac.uk>

These people contributes a lot to **CuteFTP** development by finding tons of bugs, which I overlooked myself. **Thanks guys!**

Also, Thanks goes to:

Barbara Parkman for a collection of very **cute** icons for **CuteFTP**.

John A. Junod for his excellent WS_FTP client, which inspired me to start making **CuteFTP**.

Harry J. Saal, President and CEO of Smart Valley, Inc. for valuable advice on **CuteFTP's** marketing issues.

Abraham Shacham of TGV Inc. for kindly providing a copy of TGV's MultiNet stack for testing with **CuteFTP**.

All my **registered users** for financially supporting **CuteFTP** development.

I'd also like to thank everybody who sent me any comments, suggestions and bug reports.

Thanks to all of you! All this wouldn't be possible if not for your support!

Find command

Hot-key: Ctrl+F

This command allows you to search file names and descriptions in the current directory for a piece of text. The first entry found will be hi-lighted. Subsequent entries can be found with Find Next command.

Find Next command


Hot-key: Ctrl+G

This command repeats last Find command and hi-light any subsequent matching entries.

Drag-and-Drop

Drag-and-drop is a special inputting technique, simplifying copy and move operations. To use it, you must move the mouse pointer to the source object (e.g. list box entry), press-and-hold left mouse button, "drag" (i.e. move mouse pointer) the object to it's target, and "drop" the object by releasing the mouse button.

Quick Connect Command

Toolbar: 
Hot-key: Ctrl+C

This command will bring up a stripped down FTP Site Edit dialog. You can fill in the minimum needed information about remote FTP Site and connect to it right away, without having to go through FTP Sites Manager procedure.

Nothing will be save in FTP Sites database, so all the info you supply will be lost after the session ends.

This command is provided to allow fast and easy connection to FTP sites, that you're only going to use once. It is recommended that you use FTP Site Manager wherever possible.

Filtering Directory Listings

DON'T HAVE TIME TO WRITE THIS PART NOW, SO HERE'S A QUICK'N'DIRTY EXPLANATION.

Filter Mask: A UNIX-style wildcard-based expression, being the criteria for filtering directory listings.

Valid characters are:

- ? Match any single character
- * Match any sequence of characters (including no characters at all), terminated by the next character in the mask.
- [] Match any character in the character set, enclosed in the brackets.
Can also be a range of characters (e.g. [A - Z])
If the opening bracket is followed by !, matches any character **NOT** in the set.

Local Filtering: Download entire directory listing and perform filtering locally. This method is faster, since it doesn't require re-downloading of the listing when filter mask changes. Also, allows you to use UNIX-style wildcards on DOS files in local browser.

Remote Filtering: Let the remote host do the filtering and produce a filtered listing. Requires re-downloading of the listing on every filter mask change, but can be useful when trying to get a small piece of a large directory, or if there're any compatibility problems.

Filter Dirs: Specifies whether directories and links should be included in filtering. Available only with **Local Filtering** method.

Selecting groups of files

DON'T HAVE TIME TO WRITE THIS PART NOW, SO HERE'S A QUICK'N'DIRTY EXPLANATION.

Select Group: Select a group of files, based on UNIX-style wildcard expression.

Deselect Group: Deselect a group of files, based on UNIX-style wildcard expression.

Invert selection: Invert selection of each entry.

Dialog box fields

Filter Mask: UNIX-style wildcard expression. See [Filtering Directory Listings](#) for more info on the format.

Mask Directories: Apply the operation to directories (dirs are excluded from the operation, if unchecked)

Remove selection: If selecting a group, this option specifies whether the current selection should be cleared before starting the operation.

